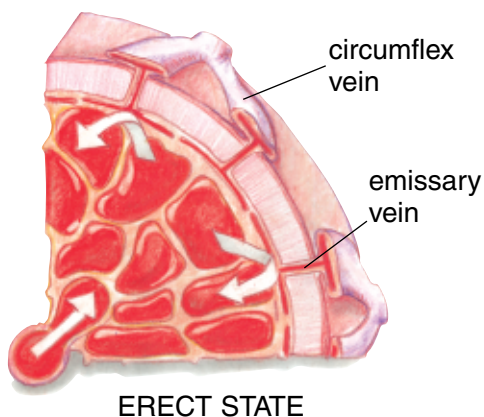
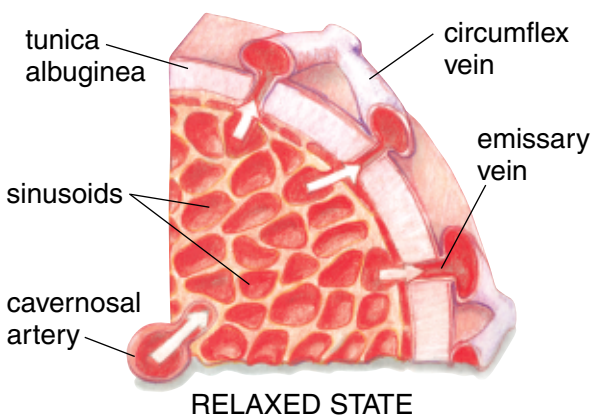
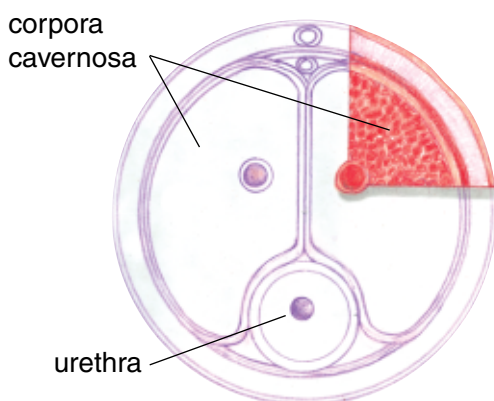

HOW AN ERECTION OCCURS

The illustrations below show a cross section of the penis. In the relaxed state, blood flows from the artery that feeds each of the corpora cavernosa, through the sinusoids, and empties via the emissary veins that lie within the tunica albuginea. In the erect state, the smooth-muscle walls of the sinusoids relax, allowing blood to expand the sinusoids, which results in swelling of the penis and compression of the emissary veins. Any further flow of blood into the penis causes rigidity.



Diabetes Self-Management, "Say Yes to Intimacy" by Donna Rice, BSN, RN, CDE

Copyright © 2010 R.A. Rapaport Publishing, Inc. All rights reserved.

No reproduction, distribution or transmission of any portion of this site is permitted without the express written permission of R.A. Rapaport Publishing, Inc.

Use of this site is subject to our Terms and Conditions and Privacy Policy. By using this site, you accept and agree to such Terms and Conditions and Privacy Policy.